

18.40 RXJ



www.ommelift.dk

CRAWLER MOUNTED BOOM PLATFORM

OMMELIFT



Quality since 1906



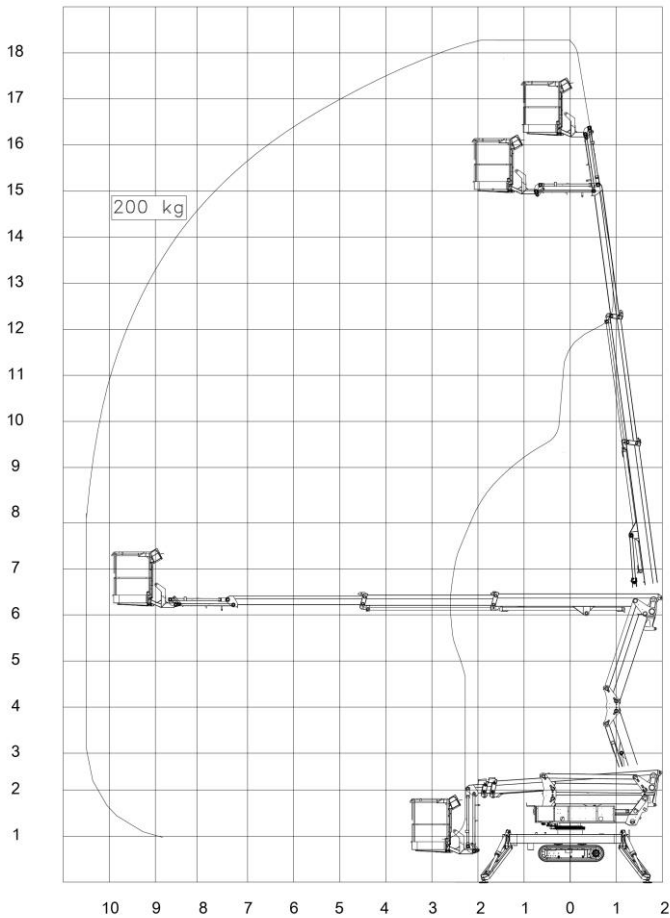
Sales
Rental
Service

 **HELI**.be

Vantegemstraat 9 | B-9230 Wetteren | +32 9 368 80 80 | info@heli.be

18.40 RXJ - 200

Crawler mounted



Technical Data:	18.40 RXBJ Battery-power	18.40 RXBPJ Hybrid-power
Max. working height	18.25 m	
Max. outreach	10.50 m	
Max. basket load	200 kg	
Basket size	1.25x0.8x1.1m	
Turret rotation	± 355°	
Basket rotation	± 50°	
Battery	24V/278Ah/5h	24V/200Ah/5h
Charger	24 V/30 A	24 V/30 A
Petrol engine		8.7kW/11.7hp
Generator		Standard
Total weight	2880 kg	2860 kg
Travelling length	5.54 m / 4.79 m	
Travelling height	1.99 m	
Travelling width	0.79 / 1.18 m	
Operational width	3.25 m	
Up and down slope up to	30% (16.7°)	
Stabilization up to	21% (12.0°)	
Proportional controls	Standard	
230 V outlet in basket	Standard	
Transformer	Standard	Option
Wireless remote control	Option	
Automatic levelling	Option	
Non-marking tracks	Option	

MORE OUTREACH



Up and over



Narrow



Flush basket mount



Intuitive controls

18.40 RXJ has an articulating riser system working in a straight vertical line providing maximum up and over outreach. The compact dimensions give exceptional maneuverability in confined spaces. Simple and intuitive controls make operator instruction easy and work quicker.

True hybrid Engine and battery power with automatic re-charge of the battery pack when the engine is on. Continuous re-charge is also possible with an on-board charger during lift operation and without interruptions. Battery power means no direct mains power annoyance with trailing power cables and voltage drop.

Battery power No fume operation with an extended large battery capacity. In order to accommodate extreme and long term usage a back-up transformer for direct mains connection is included.

Optional

Diesel engine (9.9kW/13.3hp) instead of petrol.
Drive and set-up from ground or basket (operate from hotspot).

- **Unrestricted outreach**
- **Detachable basket**
- **No computerisation**
- **Rental ready**

10.16-Subject to change without notice. Data dimension and features are indicative and not binding.