

Specifications

Model	Z-62/40	
Measurements	Metric	US
Working height maximum*	20.87 m	67 ft 11 in
Platform height maximum	18.87 m	61 ft 11 in
Horizontal reach maximum	12.42 m	40 ft 5 in
Up and over clearance maximum	7.80 m	25 ft 7 in
A Platform length - 8 ft / 6 ft model	0.91 m / 0.76 m	3 ft / 2 ft 6 in
B Platform width - 8 ft / 6 ft model	2.44 m / 1.83 m	8 ft / 4 ft
C Height - stowed	2.4 m	8 ft 6 in
Height - transport (jib tucked under)	2.90 m	9 ft 6 in
D Length - stowed	9.25 m	30 ft 4 in
Length - transport (jib tucked under)	7.58 m	24 ft 10.5 in
E Width	2.49 m	8 ft 2 in
F Wheelbase	2.49 m	8 ft 2 in
G Ground clearance - center	0.41 m	1 ft 3 in

Productivity

Lift capacity	227 kg	500 lbs
Platform rotation	180°	180°
Vertical jib rotation	135°	135°
Turntable rotation	360° continuous	
Turntable tailswing	zero	zero
Drive speed - stowed	4.8 km/h	3.0 mph
Drive speed - raised**	1.1 km/h	0.68 mph
Gradeability - 4WD - stowed***	45%	45%
Turning radius - 2 WS - inside	2.8 m	9 ft 2 in
Turning radius - 2 WS - outside	5.7 m	18 ft 9 in
Turning radius - 4 WS - inside	1.3 m	4 ft 5 in
Turning radius - 4 WS - outside	3.6 m	11 ft 11 in
Controls	12V DC proportional	
Tyres	355/55D 625	

Power

Power source	Deutz D2011 L03i 3 cylinder diesel 35.8 kW (48 hp)	
Auxiliary power unit	12V DC	12V DC
Hydraulic tank capacity	132.5 L	35 gal
Fuel tank capacity	136.3 L	36 gal

Sound & Vibration Levels

Sound pressure level (ground workstation)	84 dBA	84 dBA
Sound pressure level (platform workstation)	75 dBA	75 dBA
Vibration	<2.5 m/s ²	<8 ft 2 in/s ²

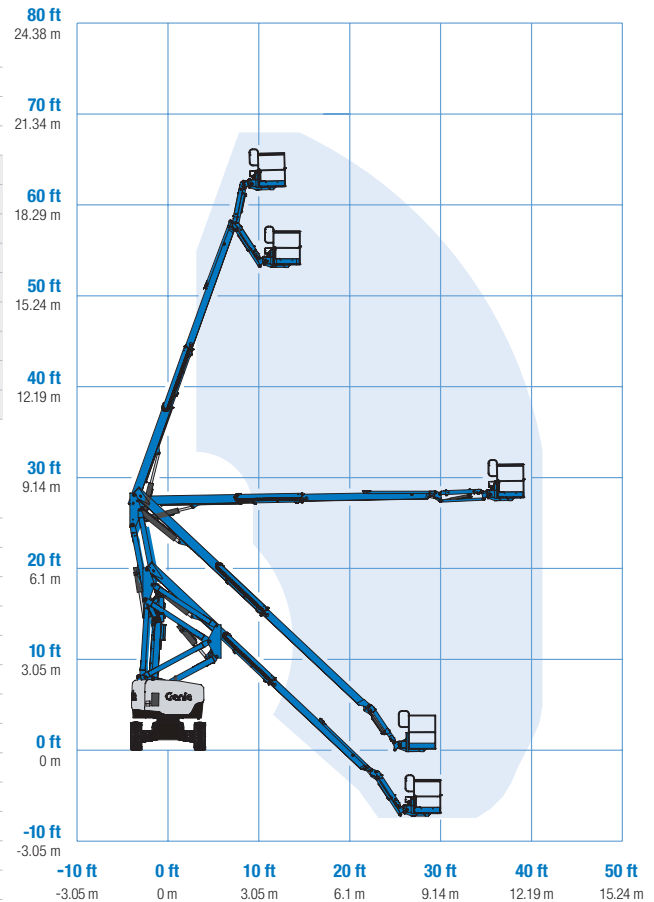
Weight****

CE 4WD (foam filled tyres)	10,281 kg	22,665 lbs
----------------------------	-----------	------------

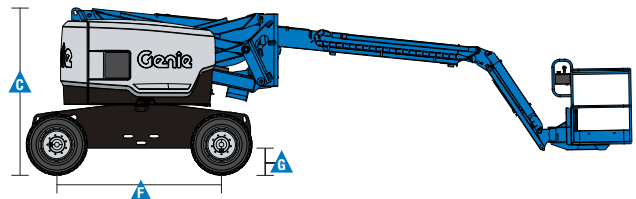
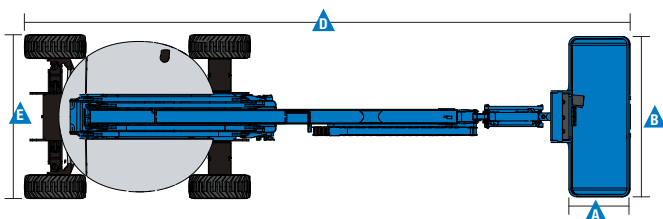
Standards Compliance

EU Directives: 2006/42/EC - Machinery (harmonized standard EN280); 2004/108/EC (EMC); 2000/14/EC (Outdoor Noise)

Range Of Motion Z-62/40



* The metric equivalent of working height adds 2 m to platform height. U.S. adds 6 ft to platform height.
 ** In lift mode (platform raised), the machine is designed to operate on firm, level surfaces only.
 *** Gradeability applies to driving on slopes. See operators manual for details regarding slope ratings.
 **** Weight will vary depending on options and/or country standards.



Features

Standard Features	Easily Configured To Meet Your Needs	Options & Accessories
-------------------	--------------------------------------	-----------------------

Measurements

- 20.87 m (67 ft 11 in) working height
- 12.47 m (40 ft 11 in) horizontal reach
- 8.13 m (26 ft 8 in) up and over clearance
- Up to 227 kg (500 lbs) lift capacity

Productivity

- Self-leveling platform
- Hydraulic platform rotation
- Proportional joystick controls
- Telematics-Ready Connector
- Hydraulic oil cooler
- Thumb rocker steering
- Drive enable
- Chassis tilt drive function cut-out
- AC power cord to platform
- Horn
- Hour meter
- Tilt alarm
- Descent & travel alarms
- Flashing beacon
- 360° continuous turntable rotation
- Locking turntable covers
- Zero tailswing
- Positive traction drive
- 2 speed wheel motors
- Dual parallelogram for vertical wall tracking
- Lift Guard™ Contact Alarm

Power

- 12V DC auxiliary power
- Engine protection package
- Anti-restart engine protection
- Auto engine fault shutdown
- Intake air heater

Platform Options

- Steel 2.44 m (8 ft) tri-entry with side swing gate (standard)
- Steel 1.83 m (6 ft) dual entry with side swing gate

Jib

- 1.52 m (5 ft) jib boom (standard)

Engine

- Deutz diesel 35.8 kW (48 hp)

Drive/Steer

- 4WD, 2WS (Standard)
- 4WD, 4WS (optional)

Axle

- Active oscillation (standard)

Tyre Options

- Rough terrain foam-filled (standard)
- Rough terrain non-marking (foam-filled)

Productivity Options

- Half-mesh platform inserts
- Platform auxiliary top rail
- Air line to platform ⁽¹⁾
- Power to platform: plug, socket, with optional Residual-current Circuit Breaker with Overcurrent protection ⁽⁴⁾
- Work lights package (2 on chassis, 2 on platform) ⁽¹⁾
- Biodegradable hydraulic oil
- Hostile environment kit ⁽¹⁾: cylinder bellows, boom wiper seals platform and ground control box covers
- Deluxe hostile environment kit ⁽¹⁾ adds to basic kit center turntable shield, ring gear guard, tail pipe guard, engine cover flaps and air pre-cleaner
- Chassis tilt lift function cut-out kit
- Track & Trace ⁽²⁾ (GPS unit providing machine location & operating information)
- Panel cradle package ⁽¹⁾
- Lockable platform control box covers
- Operator Protective Structure⁽³⁾
- Tool Tray ⁽³⁾
- Fall Arrest Bar ⁽³⁾

Power Options

- Engine gauge package ⁽¹⁾
- AC generator packages (120V/50Hz or 240V/50Hz, 3000W) ⁽¹⁾
- Diesel air intake pre-cleaner ⁽¹⁾
- Diesel catalytic scrubber muffler ⁽¹⁾
- Low temperature cut-out module
- EMEAR Cold Start kit: Inc. Engine heater & battery charger
- Cold weather package ⁽¹⁾



⁽¹⁾ Factory-fit option only
⁽²⁾ Includes a first 2 years subscription
⁽³⁾ Aftermarket only
⁽⁴⁾ Not available if generator is selected



**Sales
Rental
Service**

HELI.be

Vantegemstraat 9 | B-9230 Wetteren | +32 9 368 80 80 | info@heli.be

